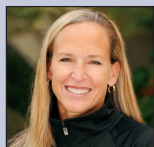


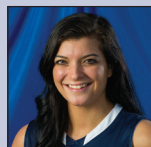
Western Women's Basketball boasts as one of the nation's elite college programs with more than 1,000 victories, which ranks among the top 10 nationally for all divisions.



**HEAD  
COACH**  
Carmen Dolfo  
29<sup>th</sup> Year



**CAMP  
DIRECTOR**  
Stacey Turrell  
8<sup>th</sup> Year



**ASSISTANT  
COACH**  
Kayla Bernsen  
2<sup>nd</sup> Year

If you have questions regarding camp operations, registration, or housing, please contact our staff at 360-650-4933 or email [stacey.turrell@wwu.edu](mailto:stacey.turrell@wwu.edu).

*The Western women's basketball staff honor diversities and values an atmosphere of positive talk and focus!*



NONPROFIT  
U S POSTAGE PAID  
WESTERN WASHINGTON  
UNIVERSITY

 **WESTERN  
WASHINGTON  
UNIVERSITY**  
Viking Girls Basketball Camp  
Cashier's Office, MS-9066  
516 High Street  
Bellingham, WA 98225

## GIRLS BASKETBALL CAMPS



## 2019

**Varsity Team  
Camp**  
July 14-18





# 2019 GIRLS BASKETBALL CAMP

## Varsity Team Camp July 14-18

Varsity Team Camp focuses primarily on team strategies and concepts. Teams are invited to register as a group, and coaches are encouraged to accompany their teams.

Emphasis will be placed on team development with the following being stressed: offensive and defensive strategies, fast break execution, last minute situations, press offense and defense, and much more. Western players will demonstrate during the mass instruction times and they are available to assist you and your team at any time.

Your team will compete in a week long tournament, as well as station work, position play, three on two, one on one, and three on three competitions.

There is an **eight player minimum** for all teams. Register early online as this camp fills quickly.

### Typical Daily Schedule

7:00 - 8:30 am.....	Breakfast
8:30 - 11:30 am.....	Basketball Activities
11:30 am - 1:00 pm .....	Lunch
1:00 - 4:00 pm .....	Basketball Activities
4:00 - 5:30 pm .....	Free time
5:30 - 7:00 pm .....	Dinner
7:00 - 9:00 pm .....	Basketball Activities
9:00 - 11:00 pm .....	Residence Activities/Free Time
11:00 pm .....	Lights Out!

(Basketball activity times vary for each camp)

### Camp Awards

Spirit Award	Free Throw Champion	Team Championships
Top Gun	3-on-3 Champions	Bump
Best Defensive Player	1-on-1 Champions	3-Point Shooting

WEBSITE  
[www.wwuvikings.com](http://www.wwuvikings.com)

BASKETBALL CAMP PHONE  
(360) 650-4933

SEND REGISTRATION TO:  
WWU Cashier  
Girls Basketball Camp  
516 High Street  
Bellingham, WA 98225-9004



### Cost and Application

Overnight Camp Fee ..... **\$300**

*Please make your check payable to Kingston High School, and return with all KHS field trip forms to the Athletic office prior to June 12th.*

The fee covers all materials, including a reversible camp jersey, room and board.

### Camp Housing

Modern residence halls are used for our camp housing. The housing is monitored 24 hours a day by WWU Resident Advisors.

All-you-can-eat meals are prepared by WWU's excellent food service staff.

### Registration and Check-In

Registration is online at [www.wwuvikings.com/sports/2018/5/23/camps.aspx](http://www.wwuvikings.com/sports/2018/5/23/camps.aspx)

\*Scroll down to Women's Basketball.

\*Under "Varsity Team Camp," select "Registration Link."

\*Select the 6th option, "Team Camp-Select a camp and enter payment amount."

\*For price, enter 0. (You will be paying \$300 to KHS, not to WWU.)

\*Under "select a camp," choose "Overnight."

\*Fill in the remaining registration information.

**Be sure to complete the page by clicking the "Add to Basket" button.**

